

# How to Upgrade your Steam Deck Storage?

**addlink S91 2230**

## **addlink S91 2230 SSD** **On Steam Deck**

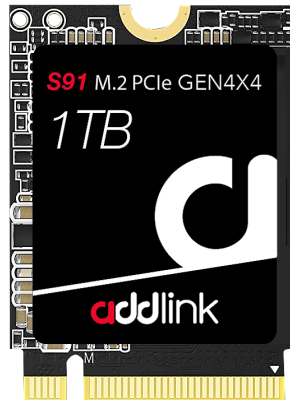
### Introduction

Important Notice

Prepare Your Tools

Backup or Install Recovery  
Image

Install your SSD



## **Introduction**

The addlink S91 series offers a range of M.2 2230 PCIe Gen4x4 SSDs specifically designed for compact mobile devices. These SSDs are compatible with various devices, including select models from Valve Steam Deck, Microsoft Surface, and popular laptop/tablet brands equipped with 2230/2242 PCIe NVMe drives.

Before proceeding with the installation process, it is essential to review the warranty policy and instructions provided by your Steam Deck manufacturer's user manual. By doing so, you can ensure that you follow proper procedures to install your SSD correctly. Please note that any installation undertake implied your agreement to assume sole responsibility for any failure to adhere to the manufacturer's instructions.

## **addlink S91 2230 SSD On Steam Deck**

Introduction

[Important Notice](#)

[Prepare Your Tools](#)

Backup or Install Recovery  
Image

Install your SSD

### **Important Notice**

1. It is important to note that modifying the hardware of your Steam Deck may void your warranty and entails certain risks. If you are unsure or lack confidence in your abilities, it is advisable to seek professional assistance.
2. Prior installing your SSD, Please thoroughly review your system's owner's manual to ensure you follow the proper procedures.
3. To prevent any damage to your SSD caused by static electricity, It is recommended to touch an unpainted metal on your computer's frame before proceeding with the installation.
4. When handling the SSD, please wear gloves or an ESD wrist strip to minimize the risk of electrostatic discharge.
5. Avoid grabbing the SSD by its packages. Instead, hold it only by the edges to prevent any potential damage.
6. Please do not disassemble or reassemble the label. If the label is missing or the product has been disassembled and damaged by user, all warranties will be void.

### **Prepare Your Tools**

1. #0 Phillips-head screwdriver (for some screws)
2. #1 Phillips-head screwdriver (for other screws)

## **addlink S91 2230 SSD On Steam Deck**

Introduction

Important Notice

Prepare Your Tools

[Backup or Install Recovery Image](#)

Install your SSD

3. Opening/prying tool (plastic opening pick or spudger)
4. M.2 NVMe 2230 SSD (recommended: addlink S91 2230 Gen4x4 SSD)
5. Steam Deck's User Manual

### **Backup or Install Recovery Image**

1. It is crucial to back up your current storage using software like Clonezilla or create an SSD image to transfer to the new SSD.
2. Alternatively, you can download the Steam Deck Recovery image onto a MicroSD or USB Type-C flash drive.

## **addlink S91 2230 SSD On Steam Deck**

Introduction

Important Notice

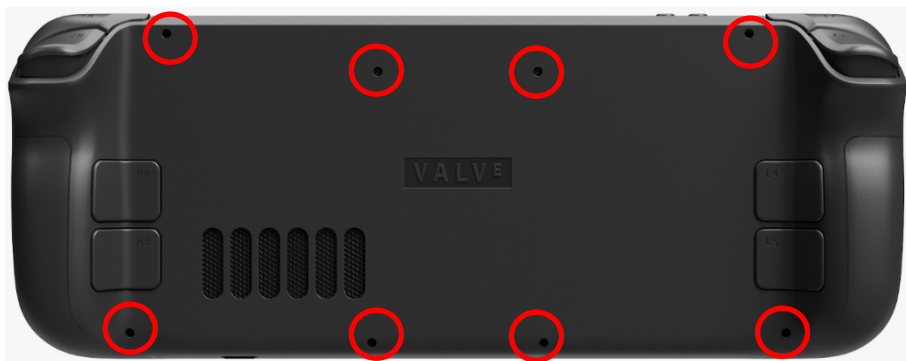
Prepare Your Tools

Backup or Install Recovery  
Image

[Install your SSD](#)

## Install your SSD on Steam Deck

1. If present, remove SD Card from the Steam Deck.
2. Unscrew the eight screws holding the back plate of the Steam Deck. Take care to differentiate between four shorter and four longer screws.



3. Start prying open the back plate for either the right grip or left grip side, unhooking the locking clips carefully.



## addlink S91 2230 SSD On Steam Deck

Introduction

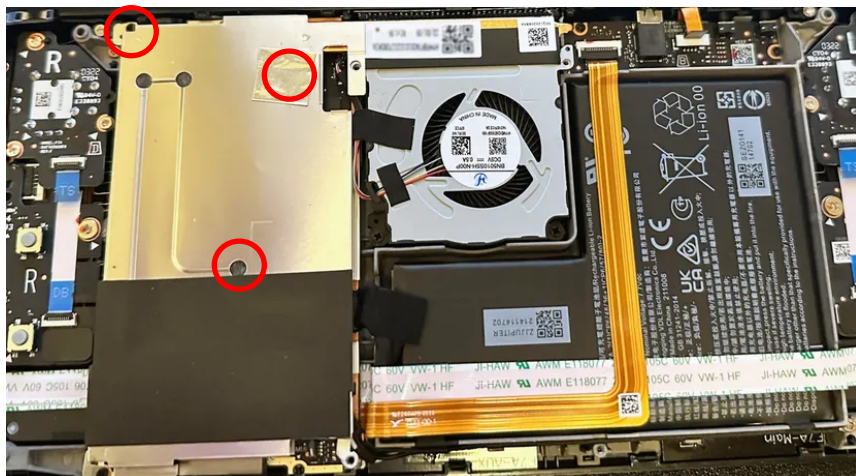
Important Notice

Prepare Your Tools

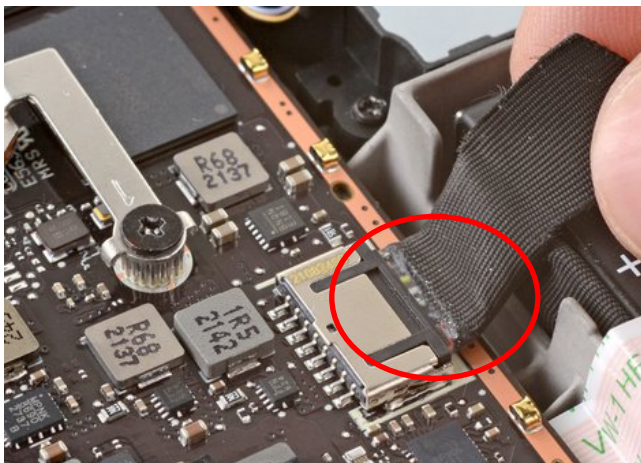
Backup or Install Recovery  
Image

[Install your SSD](#)

4. Unscrew and remove the board shielding, which covers the SSD.



5. Prior to proceeding, disconnect the Steam Deck battery to ensure safety.



## **addlink S91 2230 SSD** **On Steam Deck**

Introduction

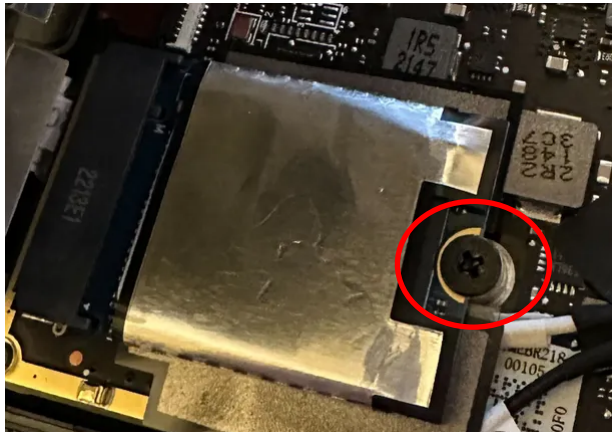
Important Notice

Prepare Your Tools

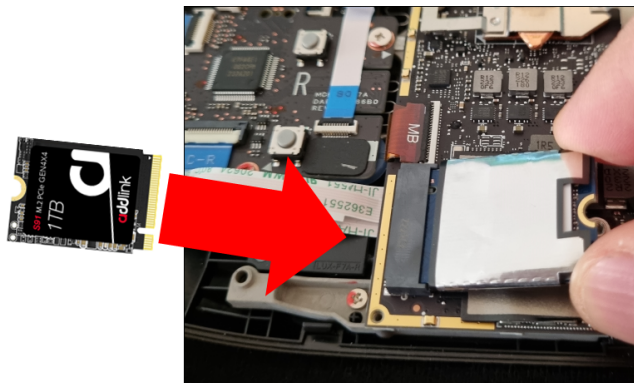
Backup or Install Recovery  
Image

[Install your SSD](#)

6. Remove the old SSD with its Electrostatic Discharge (ESD) cover.



7. Transfer the ESD Shielding from the old SSD to the new SSD and Install the new SSD securely.



## **addlink S91 2230 SSD** **On Steam Deck**

Introduction

Important Notice

Prepare Your Tools

Backup or Install Recovery  
Image

[Install your SSD](#)

Please note that modifying the hardware of your Steam Deck can void your warranty and carries some risk. If you are uncertain or lack confidence in your abilities, it's advisable to seek professional assistance.

Remember to exercise caution throughout the process and refer to official documentation or additional resources if needed.



## **HEADQUARTER**

6F., No. 300, Ruiguang Rd., Neihu Dist.,  
Taipei City 114, Taiwan (R.O.C.)

## **CONTACT INFORMATION**

TEL : +886-2-8797 3116

FAX : +886-2-8797 3522