

S70 Lite Gen3x4 Laptop SSD

Installation Guide

addlink S70 Lite **Laptop Installation** **Guide**

Introduction

Important Notice

Preparation

SSD Installation

Initializing the SSD

Single Storage Laptop



Introduction

The addlink S70 Lite Gen3x4 M.2 2280 SSD is a high-performance storage solution designed for Intel and AMD laptops. With its ultra-slim 2.25mm profile, it offers power efficiency and is an excellent choice for those seeking faster boot times and responsive applications. Available in 256GB, 512GB, 1TB, and 2TB capacities, it comes with addlink's five-year warranty.

addlink S70 Lite Laptop Installation Guide

Introduction

Important Notice

Preparation

SSD Installation

Initializing the SSD

Single Storage Laptop

Important Notice

1. **Warranty:** Before proceeding, ensure your laptop's warranty won't be voided by opening it or making modifications. Consult the manufacturer's guidelines if unsure.
2. **Professional Assistance:** If you're uncertain about the installation, consider seeking expert help.
3. **Static Electricity:** Discharge any static by touching a grounded metal object before handling the SSD.
4. **Environment:** Please do not use this product in a wet environment. Make sure that you are working in static-safe environment.
5. **Handling:** Always hold the SSD by its edges. Avoid touching connectors or components.
6. **Data Safety:** Backup all crucial data before starting.
7. **Compatibility:** Ensure your laptop supports M.2 NVMe 2280 SSDs.
8. **Operating System:** If the SSD is your primary drive, prepare a bootable USB with your desired OS.
9. **Label:** Do not remove or tamper with the SSD's label or sticker.

addlink S70 Lite **Laptop Installation** **Guide**

Introduction

Important Notice

Preparation

SSD Installation

Initializing the SSD

Single Storage Laptop

Preparation

- 1. Backup:** Secure your data by creating backups.
- 2. Tools Needed:**
 - A Phillips screwdriver
 - Your addlink M.2 NVMe SSD
 - Laptop's user manual
 - An external adapter or dock (for single-slot laptops)

addlink S70 Lite Laptop Installation Guide

Introduction

Important Notice

Preparation

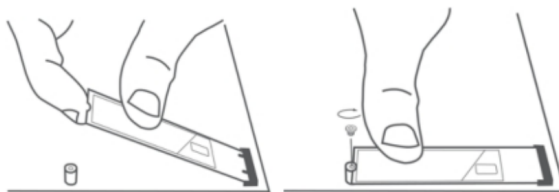
[SSD Installation](#)

Initializing the SSD

Single Storage Laptop

SSD Installation

1. Ensure the laptop is off and unplugged.
2. Detach the battery if possible.
3. Use an anti-static wristband or touch a metal object periodically.
4. Open the laptop's back panel.
5. Organize screws by size/type to avoid confusion during reassembly.
6. Identify the M.2 slot. Align the SSD with the slot's notch.
7. Insert the SSD at a 30-degree angle, then press down gently.



addlink S70 Lite Laptop Installation Guide

Introduction

Important Notice

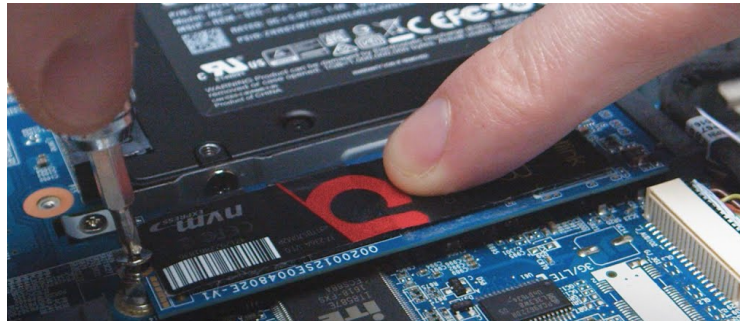
Preparation

[SSD Installation](#)

Initializing the SSD

Single Storage Laptop

8. Secure the SSD with the motherboard's screw.



9. Reattach the back panel and battery.
10. Power on the laptop and check if the SSD is detected.

addlink S70 Lite Laptop Installation Guide

Introduction

Important Notice

Preparation

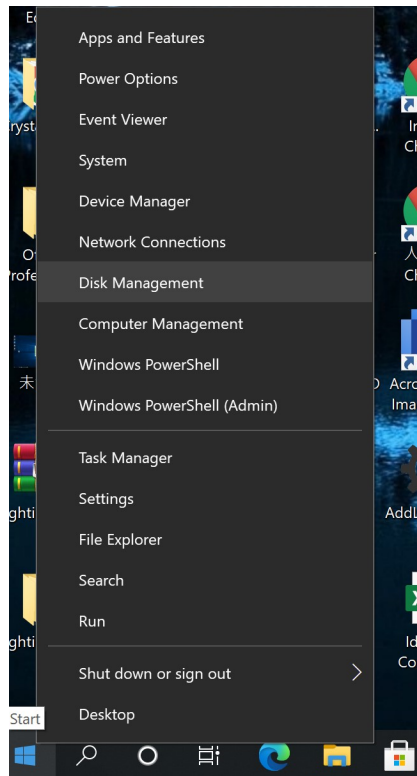
SSD Installation

Initializing the SSD

Single Storage Laptop

Initializing the SSD (Secondary Storage)

1. If the SSD doesn't appear in "My Computer" or "This PC", access "Disk Management".



addlink S70 Lite Laptop Installation Guide

Introduction

Important Notice

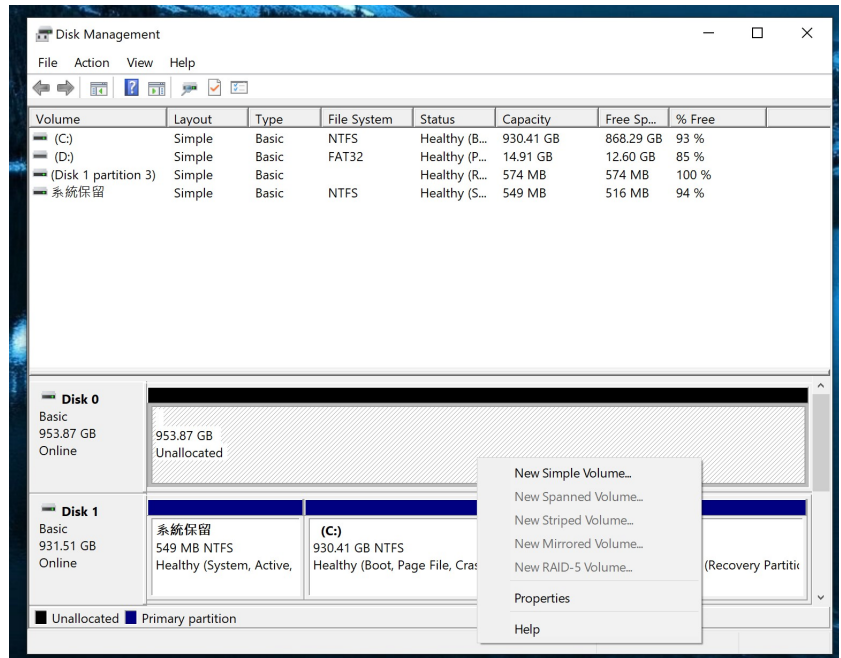
Preparation

SSD Installation

Initializing the SSD

Single Storage Laptop

2. The SSD should be listed as "Unallocated". Right-click and select "Initialize Disk".



3. Choose MBR or GPT based on your preference and SSD size.
4. Create a new volume and format the SSD.

addlink S70 Lite Laptop Installation Guide

Introduction

Important Notice

Preparation

SSD Installation

Initializing the SSD

[Single Storage Laptop](#)

For Single Storage Slot Laptops

1. Backup & Preparation:

- Backup data to an external source.
- Prepare a bootable USB with your OS.

2. **Replace Primary Drive:** Refer to the "SSD Installation" section.

3. **Boot from USB:** Access the BIOS/UEFI and set the USB as the primary boot device.

4. **OS Installation:** Follow on-screen prompts and select the SSD as the installation destination.

5. **SSD Initialization:** Post OS installation, the SSD might need initialization.

HEADQUARTER

6F., No. 300, Ruiguang Rd., Neihu Dist.,
Taipei City 114, Taiwan (R.O.C.)

CONTACT INFORMATION

TEL : +886-2-8797 3116
FAX : +886-2-8797 3522